

## IRON POWDER CORE SERIES PRODUCTS

# Drum Type Cores

### STANDARD SPECIFICATIONS

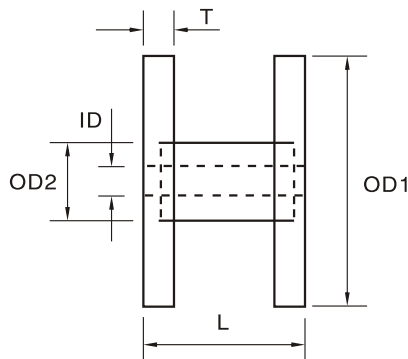
Part Number	$A_L$ nH/N <sup>2</sup>	OD1 mm	OD2 mm	ID mm	T mm	L mm	Window cm <sup>2</sup>
DR36.1 × 23.8 × 12.7	85	36.10	12.70	4.37	3.96	23.80	1.84
DR36.1 × 33.3 × 12.7	60	36.10	12.70	4.37	3.96	33.30	2.95
DR46.9 × 31.8 × 15.9	100	46.90	15.90	5.56	4.75	31.80	3.43
DR46.9 × 41.3 × 15.9	80	46.90	15.90	5.56	4.75	41.30	4.90
DR63.5 × 34.9 × 19.1	130	63.50	19.10	6.60	4.75	34.90	5.66
DR63.5 × 47.6 × 19.1	95	63.50	19.10	6.60	4.75	47.60	8.49

### TECHNICAL INFORMATION & PHYSICAL CHARACTERISTICS

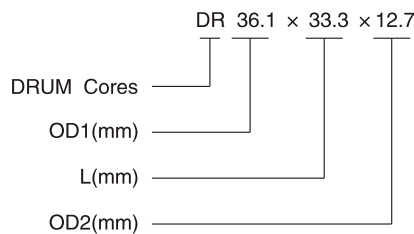
#### Size tolerance (mm)

Part Number	OD1	OD2		ID		L	T
DR36.1 – DR63.5	± 0.5	+0.00	-0.15	+0.15	-0.00	± 0.50	± 0.20

$A_L$  Value listed is approximate and is for indication only.  
 It provides other shape for high current choke to be accepted  
 few electromagnetic radiation, also has best efficiency  
 for the jointed ring of high power loudspeaker.



#### TYPICAL PART No.



$L_e$ : Mean Magnetic Path Length  
 $A_e$ : Cross Section Area  
 $V_e$ : Core Volume