

THROUGH-HOLE AXIAL FERRITE BEADS FOR EMI SUPPRESSION

RH SERIES

FEATURES:

- Ferrite Core
- Regged construction
- Counter measures for FCC,VDE
- CSA,CE,VCC1
- EMI/RFI suppression
- Small size 、 Low Cost

OPTIONS:

- Packaging: Tape & Reel is Standard (Qty: 1500 pcs)
- Bulk packaging available for smaller quantities
- Tolerance:10% is standard, tighter tolerances available.

COMMON APPLICATIONS:

- Noise Filtering
- Amplifiers
- Switching Regulators
- Power Supplies
- Triac Control Circuits
- SCR Control Circuits

STANDARD SPECIFICATIONS

Part Number	Impedance @25MHz (Ω)Min	Impedance @100MHz (Ω)Min	A	B	C	D	L1-L2
RH-3530	25	40	3.5+/-0.2	3.0+/-0.3	62+/-2.0	0.6	1
RH-3545	30	60	3.5+/-0.2	4.5+/-0.3	62+/-2.0	0.6	1
RH-3547	35	60	3.5+/-0.2	4.7+/-0.3	62+/-2.0	0.6	1
RH-3560	50	75	3.5+/-0.2	6.0+/-0.3	62+/-2.0	0.6	1
RH-3575	60	90	3.5+/-0.2	7.5+/-0.3	62+/-2.0	0.6	1
RH-3580	60	100	3.5+/-0.2	8.0+/-0.3	62+/-2.0	0.6	1
RH-3590	80	120	3.5+/-0.2	9.0+/-0.3	62+/-2.0	0.6	1
RH-3512	30	130	3.5+/-0.2	12+/-0.3	62+/-2.0	0.6	1
RH-3514	50	150	3.5+/-0.2	14+/-0.3	62+/-2.0	0.6	1

Note:1. K= ± 10%,M= ± 20%

TECHNICAL INFORMATION:

- Impedance: HP4191A or HP4194A HP4395A
- Soldering Methods: Wave,Reflow
- Operating Temperature:-25℃ to +85℃
- Storage Temperature: -55℃ to +125℃
- Terminal bending strength:24.5N Min

Note: All specifications subject to change without notice.

PHYSICAL CHARACTERISTICS:

DIMENSIONS in mm

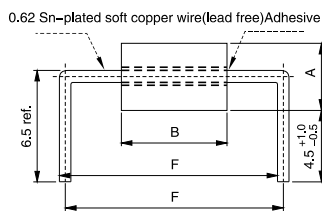
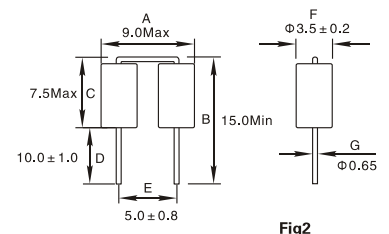
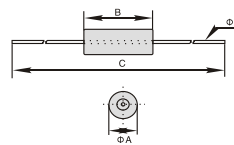


Fig3

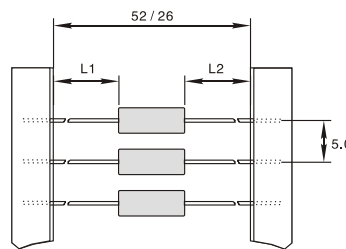


Fig1

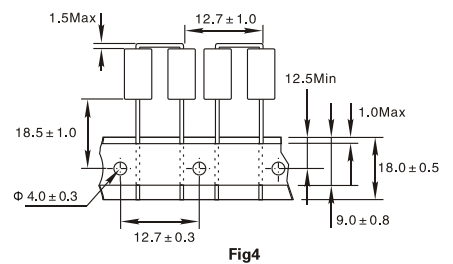


Fig4

Dimensions in mm

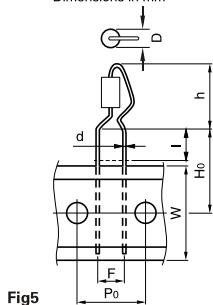


Fig5

Weight: 0.3g

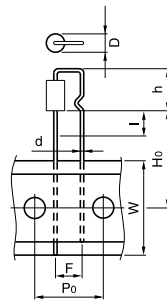


Fig6

Weight: 0.3g

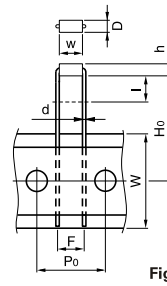


Fig7

Weight: 0.1g

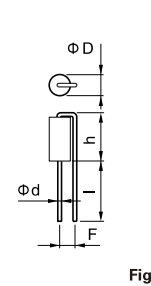


Fig8

Weight: 0.3g